

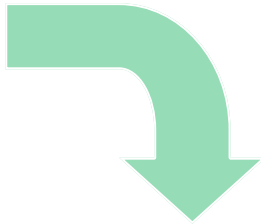
OUR HISTORY:

1977

A small group of friends came together to serve the local needs of the Community.



We started with a bookshelf full of canned goods and have grown to provide



2.8

million pounds of food in 2017

46,000

volunteer hours

GIVE

A monetary donation of \$25 to Catholic Parish Outreach will feed a family for a week.

CPO is a 501c3 organization. All donations are fully tax deductible.

ADVOCATE

Sign up for our monthly newsletter, check out our website, or follow our social media sites to learn more about our work. Your involvement and generosity makes a difference in the lives of our clients.

Learn how at www.cporaleigh.org

VOLUNTEER

Volunteers sort, pack, and distribute food, children's clothing and baby items Monday-Saturday from 9:30am to 1:30pm.

To get involved, contact our volunteer coordinator at (919) 847-1466.

FEED THE HUNGRY

Questions? Reach us by phone (919) 873-0245 or fax (919)873-0260



Catholic Parish Outreach
A Program of Catholic Charities



United Way
of the Greater Triangle
Certified Community Impact Partner

Catholic Parish Outreach
2013 Raleigh Blvd.
Raleigh, NC 27604

CATHOLIC PARISH OUTREACH



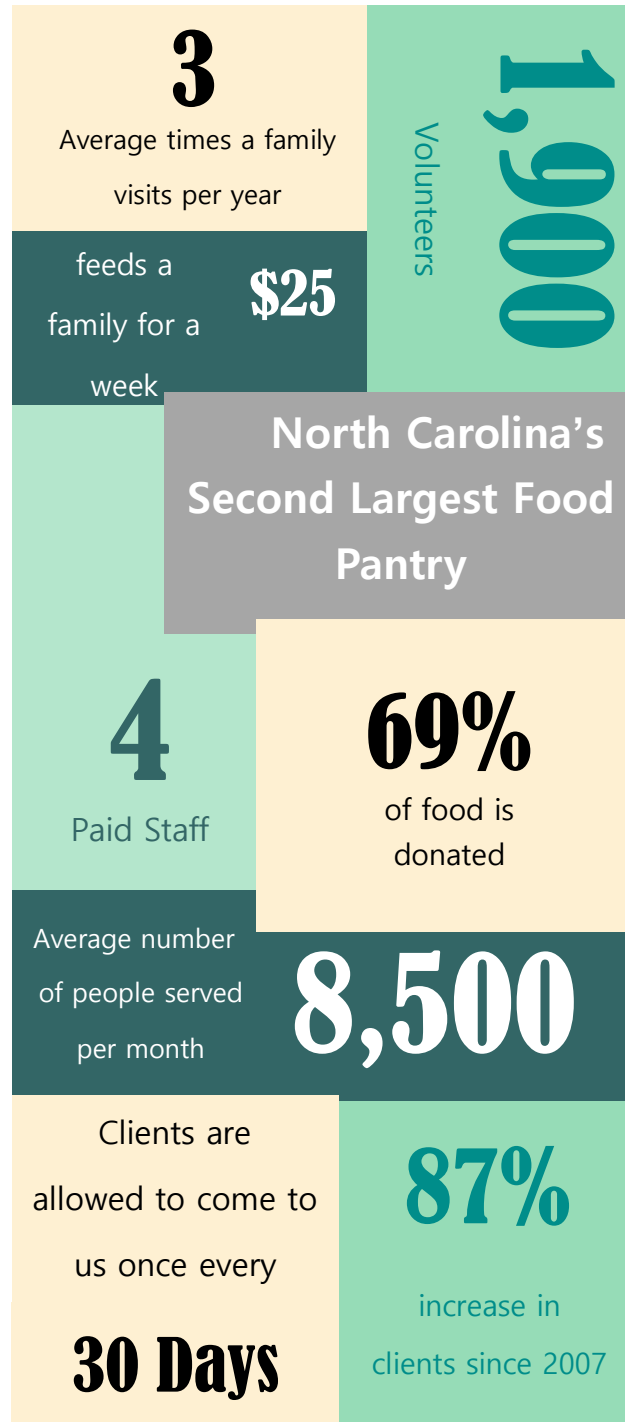
FOOD PANTRY

Who We Are

CPO is the largest food pantry in eastern NC. CPO is a program of Catholic Charities, which is a 501c3 non-profit organization. We provide emergency food assistance and when possible, small children's clothing and baby items to any resident of Wake, Johnston, or Franklin County who is referred to us in writing by social workers, churches, medical providers, and school counselors.

Our Mission

As an expression of Catholic social teachings, the mission of Catholic Parish Outreach is to serve the needy families and individuals of our community by providing supplemental food and young children's clothing.

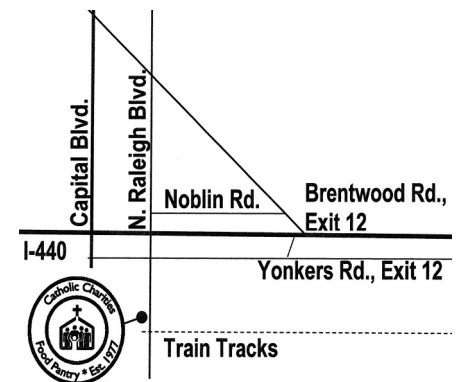


Who We Serve

- The working poor, elderly, sick, disabled, and those who just hit a rough patch this month.
- All who need emergency food assistance, regardless of age, ethnicity, gender, or beliefs.
- Our clients are eligible to receive approximately one week's worth of food every 30 days.

Our Location

CPO is located just south of the Beltline on Raleigh Blvd. near the Brentwood Rd. and Yonkers Rd. exits off Interstate 440.



Hours: 10 am to 1 pm,
Monday—Saturday